

# SOLO Taxonomy

# Surface Understanding

# Deep Understanding

# Conceptual Understanding



© Essential Resources Educational Publisher Ltd. Used with permission.

**SOLO-level**

**Prestructural**

© Hook Education Ltd. Pam Hook (2017). Illustrations Essential Resources Educational Publishers Ltd. Design by Tobias Jacoby et al Skoleafdelingen Gladsaxe Kommune.

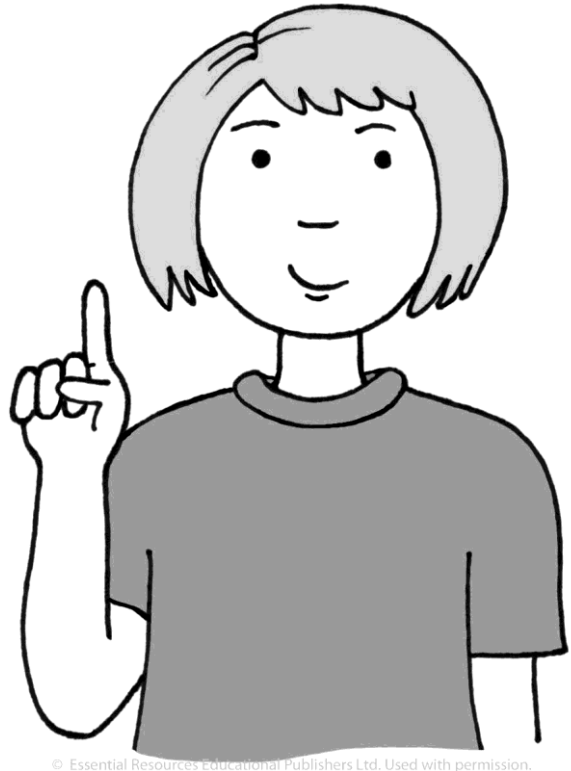


© Essential Resources Educational Publisher Ltd. Used with permission.

**SOLO-level**

**Misses the point**

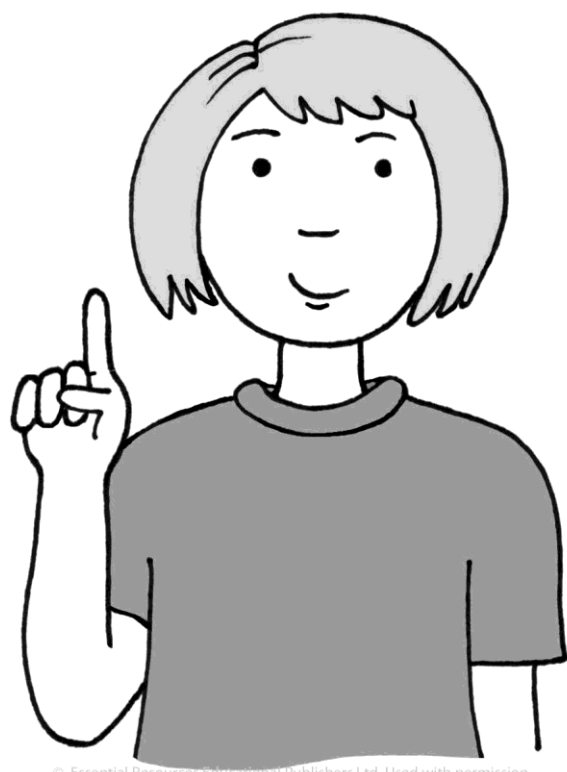
© Hook Education Ltd. Pam Hook (2017). Illustrations Essential Resources Educational Publishers Ltd. Design by Tobias Jacoby et al Skoleafdelingen Gladsaxe Kommune.



**SOLO-level of the task**

# Unistructural

© Hook Education Ltd. Pam Hook (2017). Illustrations Essential Resources Educational Publishers Ltd. Design by Tobias Jacoby et al Skoleafdelingen Gladsaxe Kommune.



**SOLO-level of the task**

# Bring in an idea

© Hook Education Ltd. Pam Hook (2017). Illustrations Essential Resources Educational Publishers Ltd. Design by Tobias Jacoby et al Skoleafdelingen Gladsaxe Kommune.

**SOLO**  
map/rubric



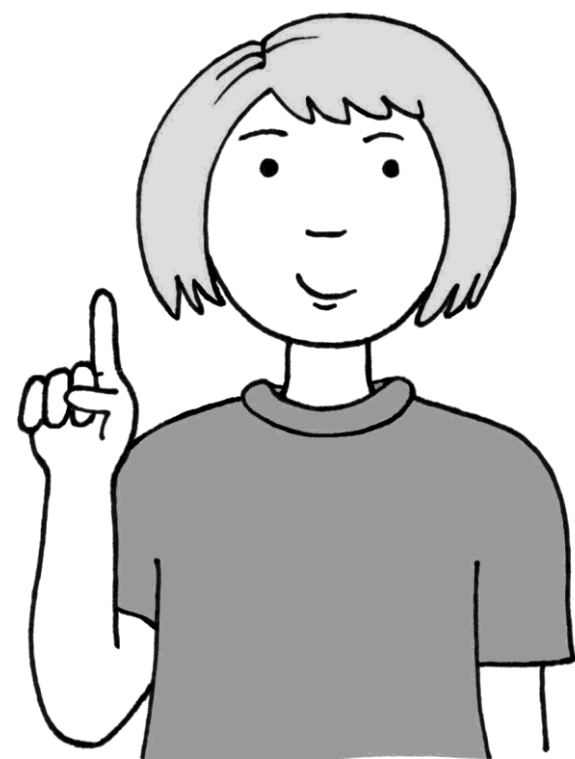
© Essential Resources Educational Publishers Ltd. Used with permission.

# Define

**What is it? What is it not?**

To identify the meaning of a word

© Hook Education Ltd. Pam Hook (2017). Illustrations Essential Resources Educational Publishers Ltd. Design by Tobias Jacoby et al Skoleafdelingen Gladsaxe Kommune.



© Essential Resources Educational Publishers Ltd. Used with permission.

# Identify

**What is it? Where is it? Who is it?**

**What is it used for?**

To know, recognise, determine, decide

© Hook Education Ltd. Pam Hook (2017). Illustrations Essential Resources Educational Publishers Ltd. Design by Tobias Jacoby et al Skoleafdelingen Gladsaxe Kommune.



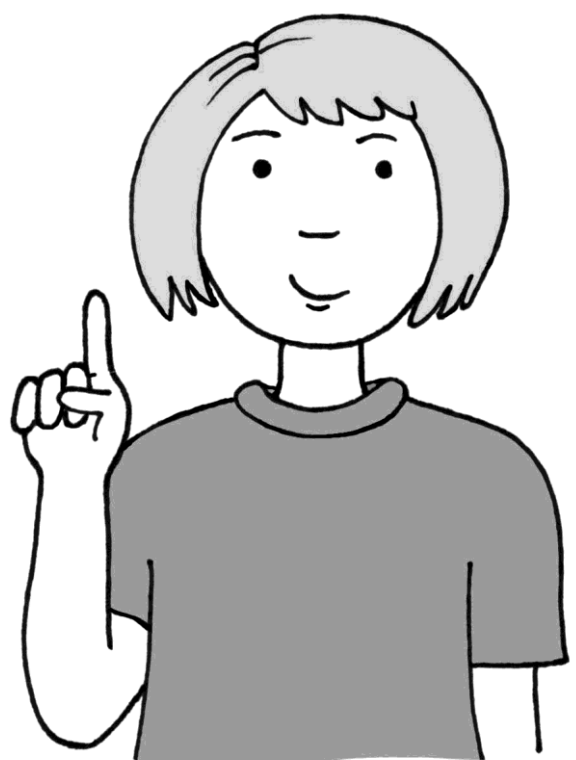
© Essential Resources Educational Publishers Ltd. Used with permission.

# Name

## What is it called?

To designate

© Hook Education Ltd. Pam Hook (2017). Illustrations Essential Resources Educational Publishers Ltd. Design by Tobias Jacoby et al Skoleafdelingen Gladsaxe Kommune.



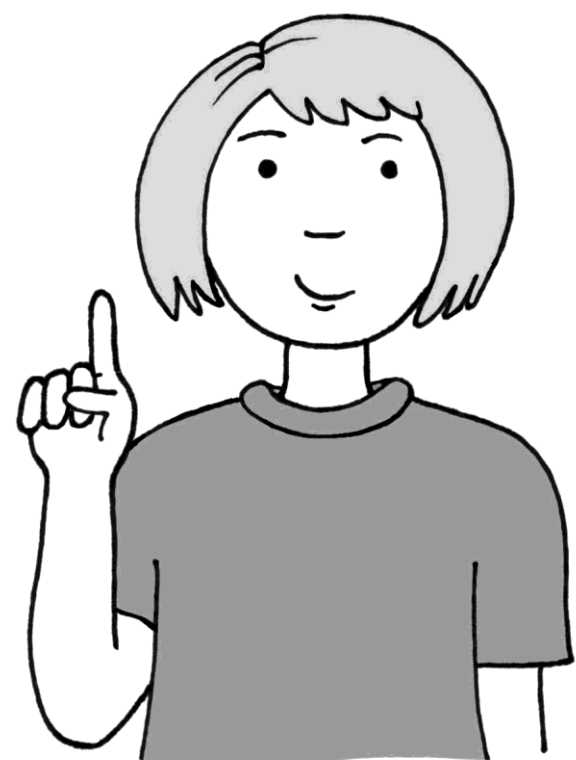
© Essential Resources Educational Publishers Ltd. Used with permission.

# Draw

## Can I sketch this?

To sketch, reproduce, represent

© Hook Education Ltd. Pam Hook (2017). Illustrations Essential Resources Educational Publishers Ltd. Design by Tobias Jacoby et al Skoleafdelingen Gladsaxe Kommune.



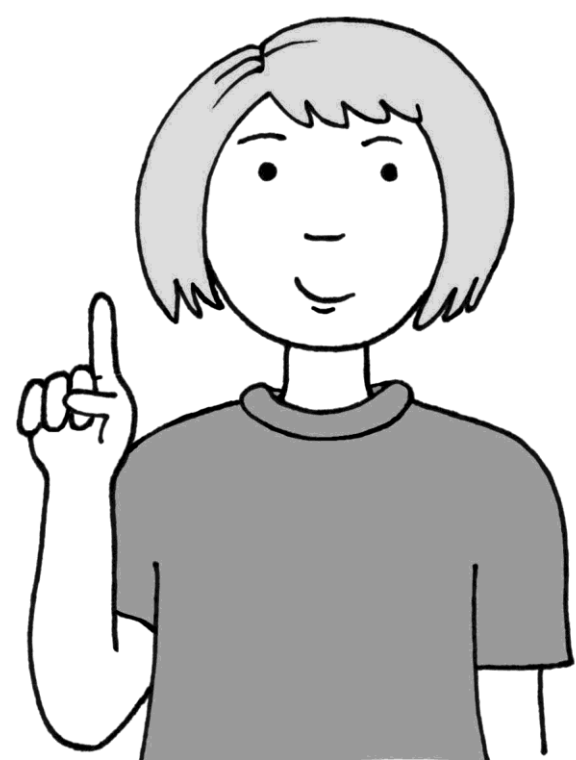
© Essential Resources Educational Publishers Ltd. Used with permission.

# Find

## Where is it?

To discover, search for

© Hook Education Ltd. Pam Hook (2017). Illustrations Essential Resources Educational Publishers Ltd. Design by Tobias Jacoby et al Skoleafdelingen Gladsaxe Kommune.



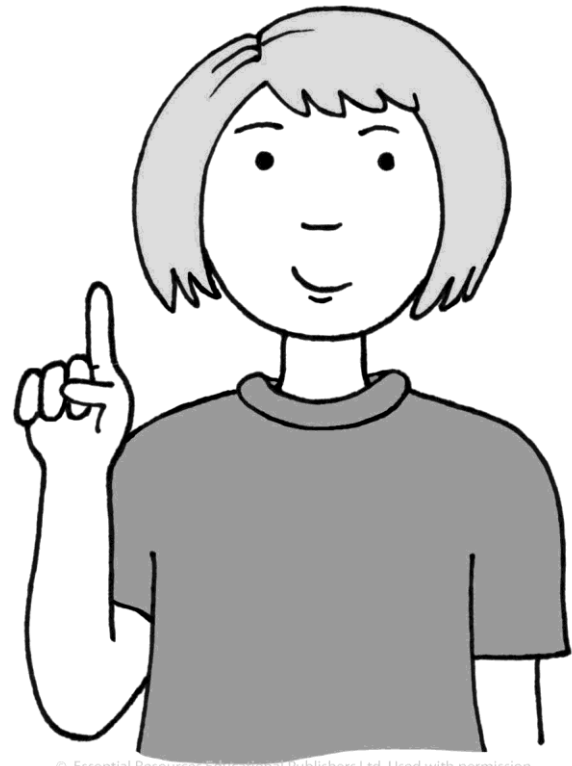
© Essential Resources Educational Publishers Ltd. Used with permission.

# Label

## What is it known as?

To designate, brand, describe by

© Hook Education Ltd. Pam Hook (2017). Illustrations Essential Resources Educational Publishers Ltd. Design by Tobias Jacoby et al Skoleafdelingen Gladsaxe Kommune.

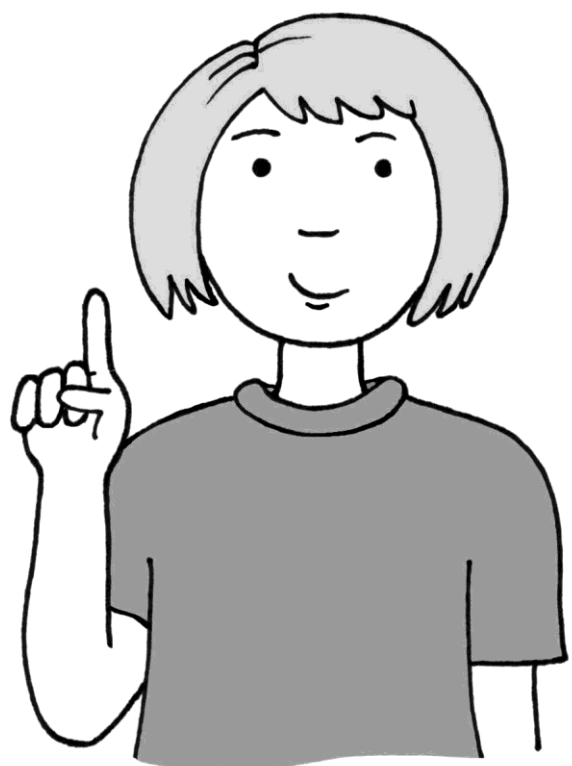


# Match

**What resembles this?**

To find similar to, fits

© Hook Education Ltd. Pam Hook (2017). Illustrations Essential Resources Educational Publishers Ltd. Design by Tobias Jacoby et al Skoleafdelingen Gladsaxe Kommune.



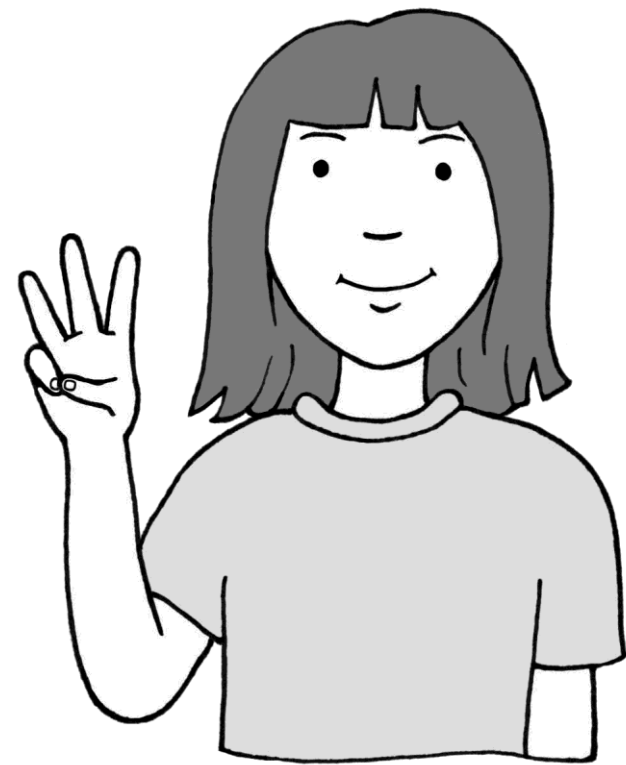
# Recall

**What do I already know?**

To remember

© Hook Education Ltd. Pam Hook (2017). Illustrations Essential Resources Educational Publishers Ltd. Design by Tobias Jacoby et al Skoleafdelingen Gladsaxe Kommune.



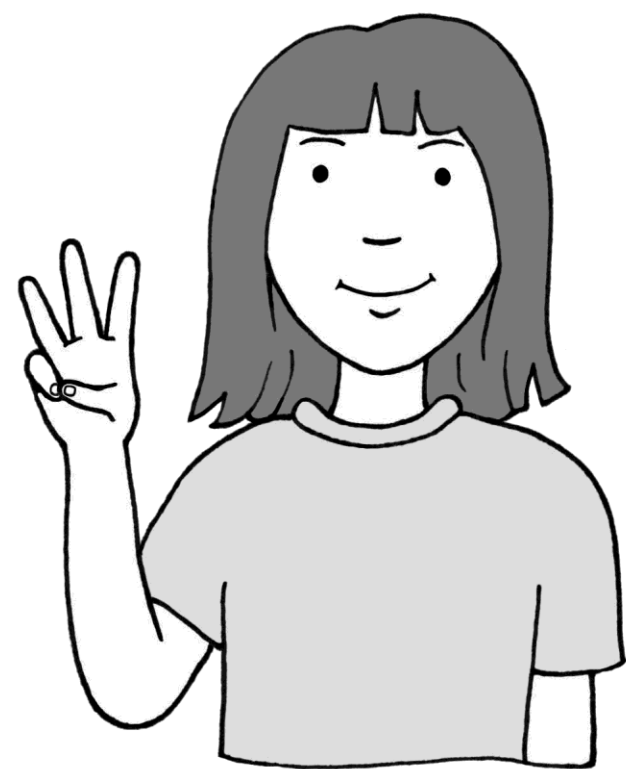


© Essential Resources Educational Publishers Ltd. Used with permission

**SOLO-level of the task**

# **Multistructural**

© Hook Education Ltd. Pam Hook (2017). Illustrations Essential Resources Educational Publishers Ltd. Design by Tobias Jacoby et al Skoleafdelingen Gladsaxe Kommune.



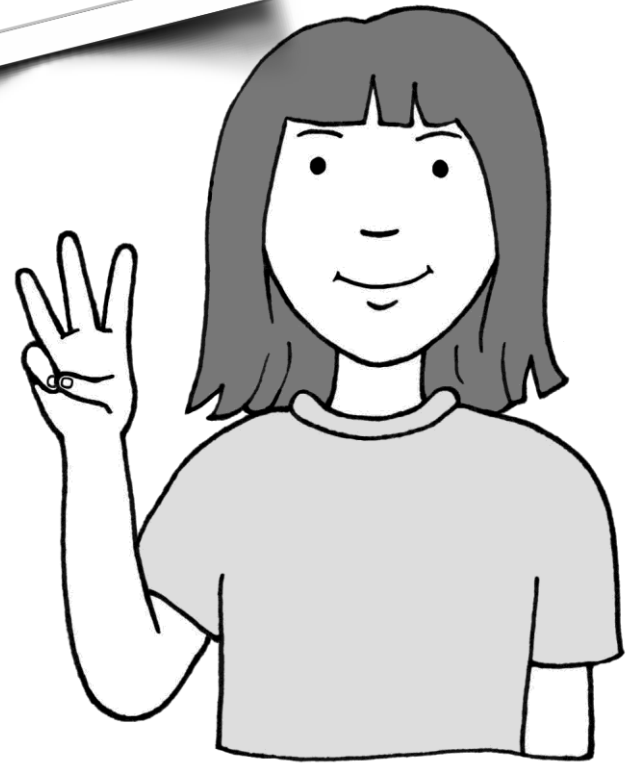
© Essential Resources Educational Publishers Ltd. Used with permission

**SOLO-level of the task**

# **Bring in ideas**

© Hook Education Ltd. Pam Hook (2017). Illustrations Essential Resources Educational Publishers Ltd. Design by Tobias Jacoby et al Skoleafdelingen Gladsaxe Kommune.

**SOLO**  
map/rubric



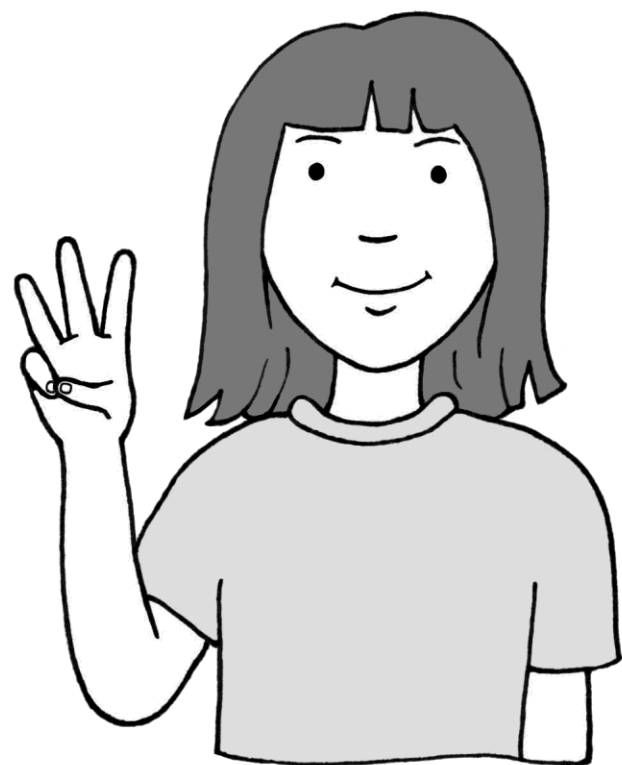
© Essential Resources Educational Publishers Ltd. Used with permission

# Describe

**What is it like?**

To represent, indicate, give an account of

© Hook Education Ltd. Pam Hook (2017). Illustrations Essential Resources Educational Publishers Ltd. Design by Tobias Jacoby et al Skoleafdelingen Gladsaxe Kommune.



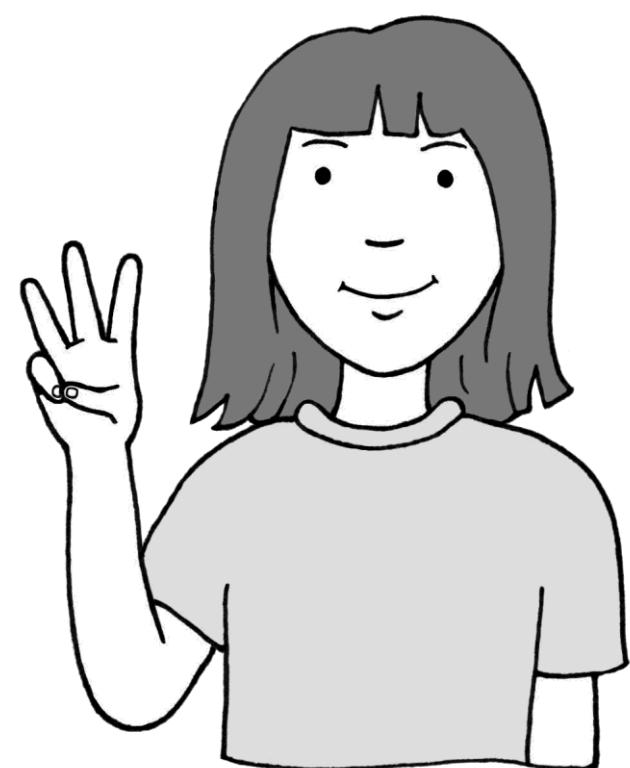
© Essential Resources Educational Publishers Ltd. Used with permission

# List

**What are the items?**

To itemise, list

© Hook Education Ltd. Pam Hook (2017). Illustrations Essential Resources Educational Publishers Ltd. Design by Tobias Jacoby et al Skoleafdelingen Gladsaxe Kommune.



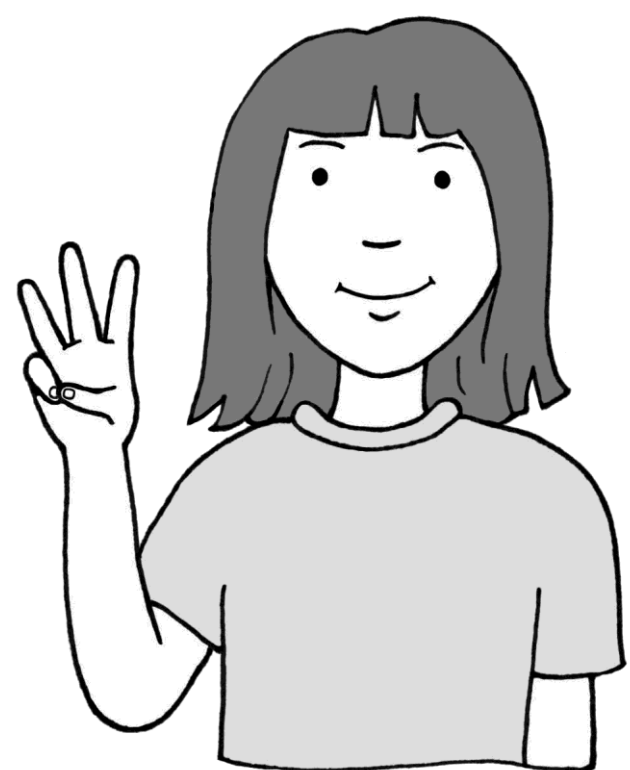
© Essential Resources Educational Publishers Ltd. Used with permission

# Give an **outline**

## What are the main ideas?

To outline, show the main features of, summarise

© Hook Education Ltd. Pam Hook (2017). Illustrations Essential Resources Educational Publishers Ltd. Design by Tobias Jacoby et al Skoleafdelingen Gladsaxe Kommune.



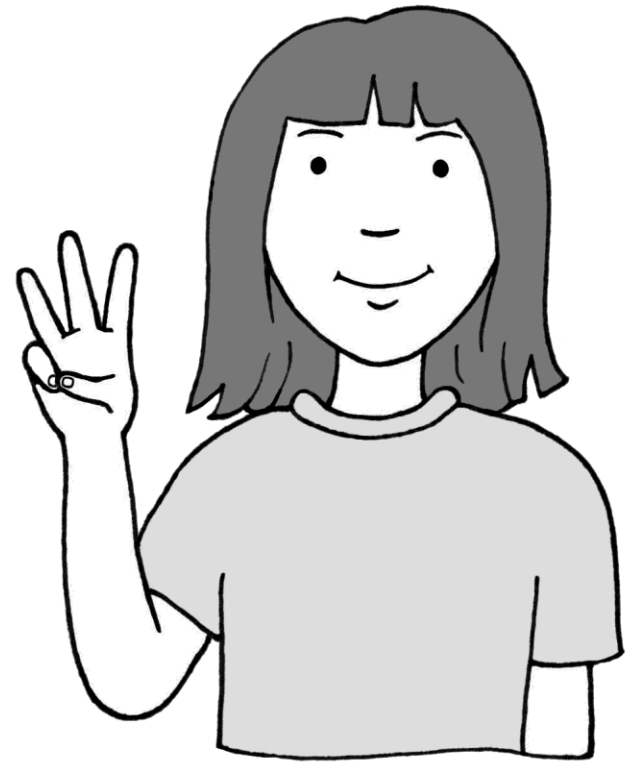
© Essential Resources Educational Publishers Ltd. Used with permission

# Follow a **procedure**

## What is a method I can follow to make it happen?

To follow a series of steps in order

© Hook Education Ltd. Pam Hook (2017). Illustrations Essential Resources Educational Publishers Ltd. Design by Tobias Jacoby et al Skoleafdelingen Gladsaxe Kommune.



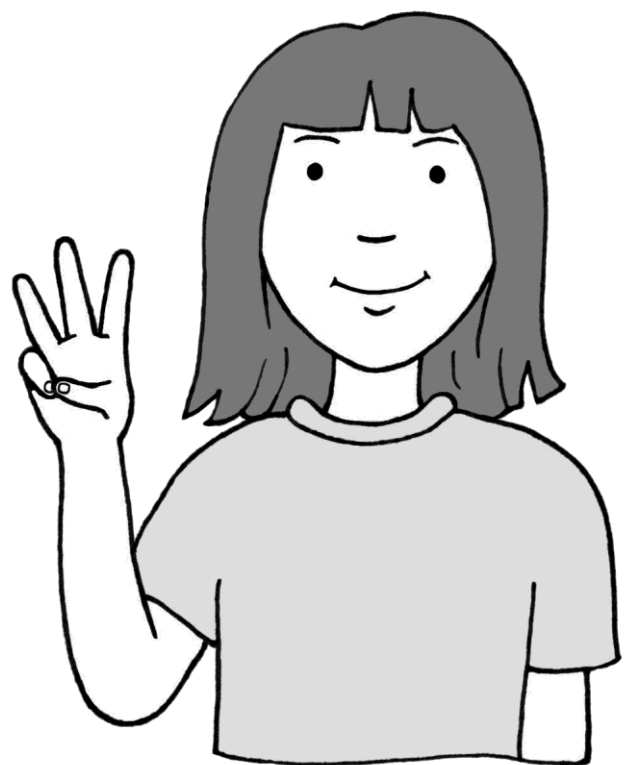
© Essential Resources Educational Publishers Ltd. Used with permission

# Calculate

**What can you determine from this?**

To determine, estimate

© Hook Education Ltd. Pam Hook (2017). Illustrations Essential Resources Educational Publishers Ltd. Design by Tobias Jacoby et al Skoleafdelingen Gladsaxe Kommune.



© Essential Resources Educational Publishers Ltd. Used with permission

# Clarify

**Can you give more details?**

To simplify, make clear

© Hook Education Ltd. Pam Hook (2017). Illustrations Essential Resources Educational Publishers Ltd. Design by Tobias Jacoby et al Skoleafdelingen Gladsaxe Kommune.



© Essential Resources Educational Publishers Ltd. Used with permission

**SOLO-level of the task**

**Relational**

© Hook Education Ltd. Pam Hook (2017). Illustrations Essential Resources Educational Publishers Ltd. Design by Tobias Jacoby et al Skoleafdelingen Gladsaxe Kommune.



© Essential Resources Educational Publishers Ltd. Used with permission

**SOLO-level of the task**

**Connect ideas**

© Hook Education Ltd. Pam Hook (2017). Illustrations Essential Resources Educational Publishers Ltd. Design by Tobias Jacoby et al Skoleafdelingen Gladsaxe Kommune.

**SOLO  
map/rubric**



© Essential Resources Educational Publishers Ltd. Used with permission

# Classify

**What do they have in common?  
What are the groups and subgroups?**

To group, categorise, divide, arrange,

© Hook Education Ltd. Pam Hook (2017). Illustrations Essential Resources Educational Publishers Ltd. Design by Tobias Jacoby et al Skoleafdelingen Gladsaxe Kommune.

**SOLO  
map/rubric**



© Essential Resources Educational Publishers Ltd. Used with permission

# Sequence

**What happened first? What is  
the order of the events?**

To sequence, put in order

© Hook Education Ltd. Pam Hook (2017). Illustrations Essential Resources Educational Publishers Ltd. Design by Tobias Jacoby et al Skoleafdelingen Gladsaxe Kommune.



**SOLO  
map/rubric**



© Essential Resources Educational Publishers Ltd. Used with permission

# Compare contrast

**How are they the same? How are they different?**

To consider the likeness - similarity and the difference between two things

© Hook Education Ltd. Pam Hook (2017). Illustrations Essential Resources Educational Publishers Ltd. Design by Tobias Jacoby et al Skoleafdelingen Gladsaxe Kommune.

**SOLO  
map/rubric**



© Essential Resources Educational Publishers Ltd. Used with permission

# Explain causes

**Why did it happen? How did it happen? What is the reason for this?**

To determine the reasons, give causes, to explain how and why

© Hook Education Ltd. Pam Hook (2017). Illustrations Essential Resources Educational Publishers Ltd. Design by Tobias Jacoby et al Skoleafdelingen Gladsaxe Kommune.

**SOLO  
map/rubric**



© Essential Resources Educational Publishers Ltd. Used with permission

# Analyse

**What are the parts? How do they work together?**

To determine the parts or essential features and what they contribute to the whole

© Hook Education Ltd. Pam Hook (2017). Illustrations Essential Resources Educational Publishers Ltd. Design by Tobias Jacoby et al Skoleafdelingen Gladsaxe Kommune.

**SOLO  
map/rubric**



© Essential Resources Educational Publishers Ltd. Used with permission

# Explain effects

**What happened as a result?**

To determine the consequence, impact, outcome, effect.

© Hook Education Ltd. Pam Hook (2017). Illustrations Essential Resources Educational Publishers Ltd. Design by Tobias Jacoby et al Skoleafdelingen Gladsaxe Kommune.





© Essential Resources Educational Publishers Ltd. Used with permission

# Organise

**How do I arrange these ideas? How do I sort this? How do I keep track?**

To arrange, sort, structure

© Hook Education Ltd. Pam Hook (2017). Illustrations Essential Resources Educational Publishers Ltd. Design by Tobias Jacoby et al Skoleafdelingen Gladsaxe Kommune.



© Essential Resources Educational Publishers Ltd. Used with permission

# Distinguish

**How does this differ?**

To separate on the basis of distinctive features

© Hook Education Ltd. Pam Hook (2017). Illustrations Essential Resources Educational Publishers Ltd. Design by Tobias Jacoby et al Skoleafdelingen Gladsaxe Kommune.



© Essential Resources Educational Publishers Ltd. Used with permission

# Interview

## What questions should I ask?

To question, consult, and evaluate thought and actions

© Hook Education Ltd. Pam Hook (2017). Illustrations Essential Resources Educational Publishers Ltd. Design by Tobias Jacoby et al Skoleafdelingen Gladsaxe Kommune.



© Essential Resources Educational Publishers Ltd. Used with permission

# Formulate relevant questions

To ask questions that bring in ideas, connect ideas and extend ideas.

© Hook Education Ltd. Pam Hook (2017). Illustrations Essential Resources Educational Publishers Ltd. Design by Tobias Jacoby et al Skoleafdelingen Gladsaxe Kommune.



© Essential Resources Educational Publishers Ltd. Used with permission

# Apply

**How is this relevant? How can I use this?**

To make use of, bring into action, put to use

© Hook Education Ltd. Pam Hook (2017). Illustrations Essential Resources Educational Publishers Ltd. Design by Tobias Jacoby et al Skoleafdelingen Gladsaxe Kommune.

**SOLO  
map/rubric**



© Essential Resources Educational Publishers Ltd. Used with permission

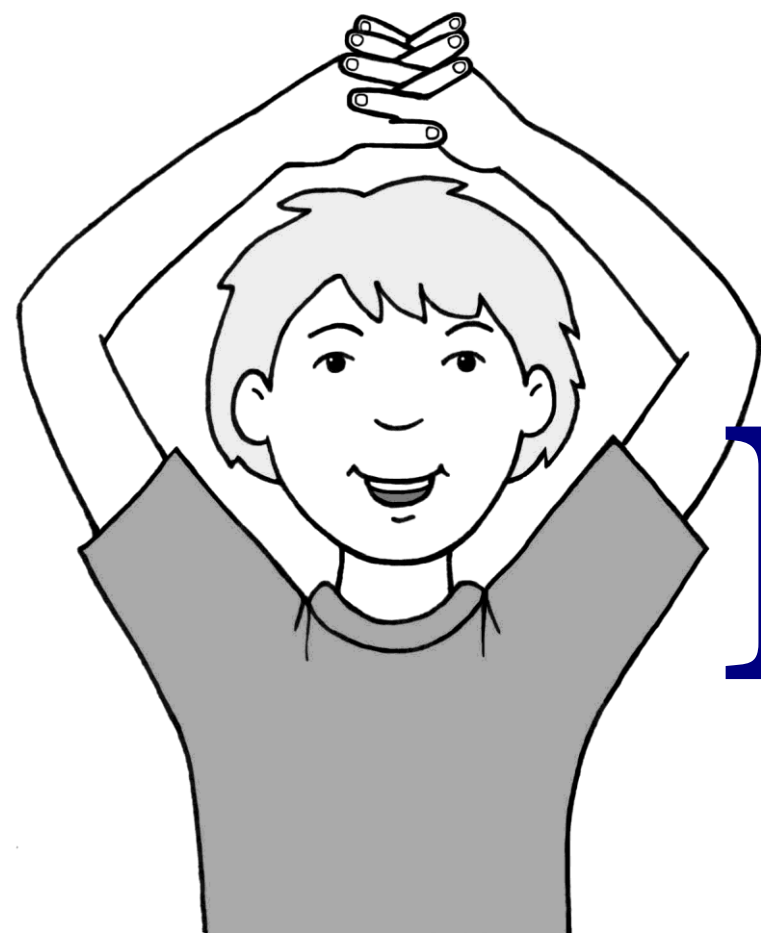
# Make an analogy

**How can I show the relationship in this case by drawing parallels to the relationship in another case?**

To find an analogy between the like features of two different things

*A is to B as C is to D*

© Hook Education Ltd. Pam Hook (2017). Illustrations Essential Resources Educational Publishers Ltd. Design by Tobias Jacoby et al Skoleafdelingen Gladsaxe Kommune.



© Essential Resources Educational Publishers Ltd. Reproduced with permission

**SOLO-level of the task**

# **Extended abstract**

© Hook Education Ltd. Pam Hook (2017). Illustrations Essential Resources Educational Publishers Ltd. Design by Tobias Jacoby et al Skoleafdelingen Gladsaxe Kommune.



© Essential Resources Educational Publishers Ltd. Reproduced with permission

**SOLO-level of the task**

# **Transfer ideas**

© Hook Education Ltd. Pam Hook (2017). Illustrations Essential Resources Educational Publishers Ltd. Design by Tobias Jacoby et al Skoleafdelingen Gladsaxe Kommune.

**SOLO**  
map/rubric



© Essential Resources Educational Publishers Ltd. Reproduced with permission

# Predict

**What do you think will happen next?**

To tell in advance, prophesy, foretell

© Hook Education Ltd. Pam Hook (2017). Illustrations Essential Resources Educational Publishers Ltd. Design by Tobias Jacoby et al Skoleafdelingen Gladsaxe Kommune.

**SOLO**  
map/rubric



© Essential Resources Educational Publishers Ltd. Reproduced with permission

# Evaluate

**What is best? Did it succeed? What is the overall effect?**

To determine the significance, worth, extent of, value, or impact. To assess or appraise

© Hook Education Ltd. Pam Hook (2017). Illustrations Essential Resources Educational Publishers Ltd. Design by Tobias Jacoby et al Skoleafdelingen Gladsaxe Kommune.



© Essential Resources Educational Publishers Ltd. Reproduced with permission

# Reflect

**What am I doing? How well is it going? What should I do next?**

To consider or think about. To look back on.

© Hook Education Ltd. Pam Hook (2017). Illustrations Essential Resources Educational Publishers Ltd. Design by Tobias Jacoby et al Skoleafdelingen Gladsaxe Kommune.



© Essential Resources Educational Publishers Ltd. Reproduced with permission

# Make a hypothesis

**What can be assumed? What do you propose? How do you explain this?**

To make an assumption, a reasoned guess, proposition or conjecture.

© Hook Education Ltd. Pam Hook (2017). Illustrations Essential Resources Educational Publishers Ltd. Design by Tobias Jacoby et al Skoleafdelingen Gladsaxe Kommune.



© Essential Resources Educational Publishers Ltd. Reproduced with permission

# Create

**What is a new way of looking at this?**

To innovate, devise, construct, generate

© Hook Education Ltd. Pam Hook (2017). Illustrations Essential Resources Educational Publishers Ltd. Design by Tobias Jacoby et al Skoleafdelingen Gladsaxe Kommune.



© Essential Resources Educational Publishers Ltd. Reproduced with permission

# Prove

**What supports my idea? What are the objections? How reliable and valid is this evidence?**

To determine the evidence for a claim

© Hook Education Ltd. Pam Hook (2017). Illustrations Essential Resources Educational Publishers Ltd. Design by Tobias Jacoby et al Skoleafdelingen Gladsaxe Kommune.





© Essential Resources Educational Publishers Ltd. Reproduced with permission

# Justify

**How can I - ethically or morally-  
defend this thought or action?**

Determine the grounds for thought and actions.

© Hook Education Ltd. Pam Hook (2017). Illustrations Essential Resources Educational Publishers Ltd. Design by Tobias Jacoby et al Skoleafdelingen Gladsaxe Kommune.



© Essential Resources Educational Publishers Ltd. Reproduced with permission

# Argue

**What are reasons to support this? What are  
the objections? What grounds do I have?**

To provide reasons for and objections to a claim;to debate.

© Hook Education Ltd. Pam Hook (2017). Illustrations Essential Resources Educational Publishers Ltd. Design by Tobias Jacoby et al Skoleafdelingen Gladsaxe Kommune.





© Essential Resources Educational Publishers Ltd. Reproduced with permission

# Plan

**How can I make it happen?**

To design a method to meet an outcome; to arrange a process of steps to achieve a goal

© Hook Education Ltd. Pam Hook (2017). Illustrations Essential Resources Educational Publishers Ltd. Design by Tobias Jacoby et al Skoleafdelingen Gladsaxe Kommune.



© Essential Resources Educational Publishers Ltd. Reproduced with permission

# Compose

**Can I give the idea artistic form? Can I use text, music, drama, dance or visual arts to communicate a message?**

To combine parts or elements to form a whole

© Hook Education Ltd. Pam Hook (2017). Illustrations Essential Resources Educational Publishers Ltd. Design by Tobias Jacoby et al Skoleafdelingen Gladsaxe Kommune.



© Essential Resources Educational Publishers Ltd. Reproduced with permission

# Prioritise

**What is the most important thing? What do I need to do first?**

To arrange or do in order of priority or importance.

© Hook Education Ltd. Pam Hook (2017). Illustrations Essential Resources Educational Publishers Ltd. Design by Tobias Jacoby et al Skoleafdelingen Gladsaxe Kommune.



© Essential Resources Educational Publishers Ltd. Reproduced with permission

# Design

**Can I challenge the concept; devise an improved, modified or differently organised version of it?**

To plan and make or adapt the form and structure of an object, work of art etc.

© Hook Education Ltd. Pam Hook (2017). Illustrations Essential Resources Educational Publishers Ltd. Design by Tobias Jacoby et al Skoleafdelingen Gladsaxe Kommune.



© Essential Resources Educational Publishers Ltd. Reproduced with permission

# Construct

**How can I make it?**

To build or form by putting together parts or simpler elements

© Hook Education Ltd. Pam Hook (2017). Illustrations Essential Resources Educational Publishers Ltd. Design by Tobias Jacoby et al Skoleafdelingen Gladsaxe Kommune.



© Essential Resources Educational Publishers Ltd. Reproduced with permission

# Perform

**How do I do this?**

To carry out, execute or do something. To fulfill an undertaking

© Hook Education Ltd. Pam Hook (2017). Illustrations Essential Resources Educational Publishers Ltd. Design by Tobias Jacoby et al Skoleafdelingen Gladsaxe Kommune.



© Essential Resources Educational Publishers Ltd. Reproduced with permission

# Invent

**Can I find a new solution?**

To innovate, make up, produce or create with the imagination

© Hook Education Ltd. Pam Hook (2017). Illustrations Essential Resources Educational Publishers Ltd. Design by Tobias Jacoby et al Skoleafdelingen Gladsaxe Kommune.

**SOLO**  
map/rubric



© Essential Resources Educational Publishers Ltd. Reproduced with permission

# Generalise

**If something is true in this case, is it true in other similar cases as well?  
What is the underlying idea?**

To infer, or form a general principle, opinion, conclusion etc. from only a few facts, or examples.

© Hook Education Ltd. Pam Hook (2017). Illustrations Essential Resources Educational Publishers Ltd. Design by Tobias Jacoby et al Skoleafdelingen Gladsaxe Kommune.

**SOLO**  
map/rubric



© Essential Resources Educational Publishers Ltd. Reproduced with permission

# Discuss

**What is the solution to this? To what extent does? What does it make you wonder?**

To consider, examine or explore ideas

© Hook Education Ltd. Pam Hook (2017). Illustrations Essential Resources Educational Publishers Ltd. Design by Tobias Jacoby et al Skoleafdelingen Gladsaxe Kommune.



© Essential Resources Educational Publishers Ltd. Reproduced with permission

# Theorise

**Can you develop a set of ideas about something that is uncertain?**

To speculate

© Hook Education Ltd. Pam Hook (2017). Illustrations Essential Resources Educational Publishers Ltd. Design by Tobias Jacoby et al Skoleafdelingen Gladsaxe Kommune.